



**DIRECT DRIVE LED**  
LINE VOLTAGE T8 TUBES

# KT-LED18.5T8-48GC-840-D /G2

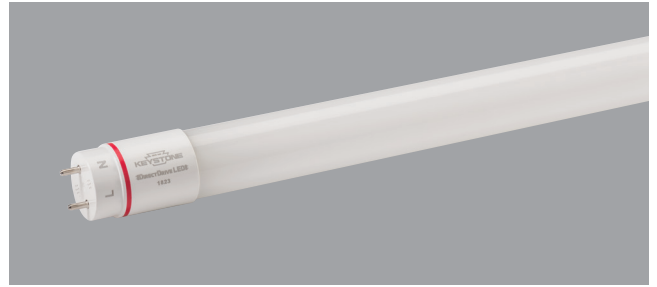
## T8 LED LAMP

### DESCRIPTION

18.5W T8 LED | 4000K | >83 CRI | High efficiency



<b>LAMP TYPE:</b> Linear
<b>BULB TYPE:</b> T8 LED
<b>BASE TYPE:</b> G13 (Medium Bi-Pin)
<b>WATTAGE:</b> 18.5W
<b>COLOR TEMPERATURE:</b> 4000K
<b>COLOR RENDERING INDEX (CRI):</b> >83
<b>WARRANTY:</b> 5 Years



### PRODUCT FEATURES

- Replacement for conventional fluorescent lamp
- 50,000+ hour lifetime
- Approximately 40% more energy efficient than Standard F32T8 lamps
- Environmentally friendly: No mercury used
- Instant startup
- Frosted lens eliminates pixelation
- UL classified
- Operating temperature: -20°C/-4°F to 45°C/113°F
- Integral driver (isolated), eliminates the need for external driver or ballast
- 110+ lumens per watt
- Improved lamp durability with shatterproof coated glass, designed to pass drop tests of 6' on hard surface
- ETL Sanitation listed NSF/ANSI Standard 2 - food equipment, splash zone (not for direct food zone without additional fixture considerations)

### OPERATING SPECIFICATIONS

#### ELECTRICAL CHARACTERISTICS

Input Voltage	Power Consumption	Power Factor	Input Current
120-277Vac	18.5W	>0.9	0.15A @ 120V 0.07A @ 277V

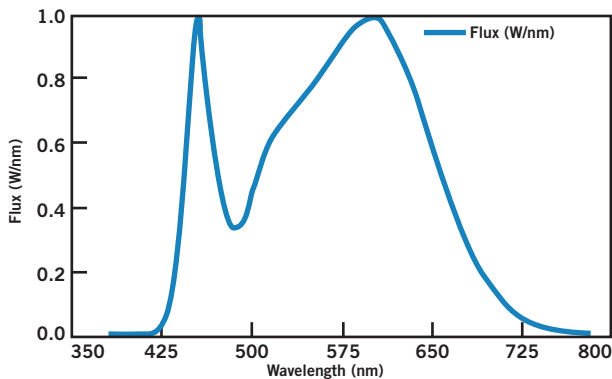
#### PHOTOMETRIC CHARACTERISTICS

Color Temperature (CCT)	4000K
Luminous Flux	2500 lm
Color Rendering Index (CRI)	>83
Efficacy	135 lm/W
Beam Angle	240°
Visible Light Area	325°

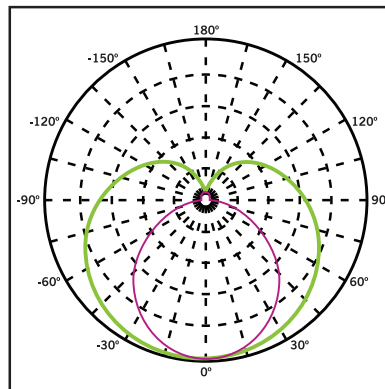
#### RATED LIFE

L70 (Hours)	50,000
-------------	--------

#### SPECTRAL DISTRIBUTION



#### POLAR CANDELA DISTRIBUTION



1. **Violet** Vertical Plane through Horizontal Angles (90-270)

2. **Green** Vertical Plane through Horizontal Angles (0-180)



# DIRECT DRIVE LED

LINE VOLTAGE T8 TUBES

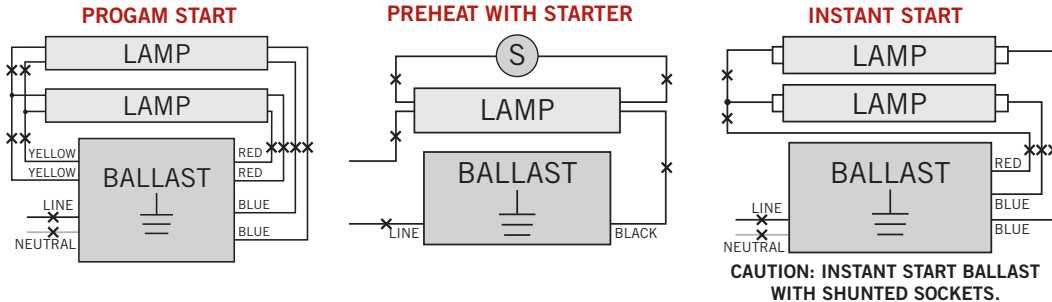
## KT-LED18.5T8-48GC-840-D /G2

### T8 LED LAMP

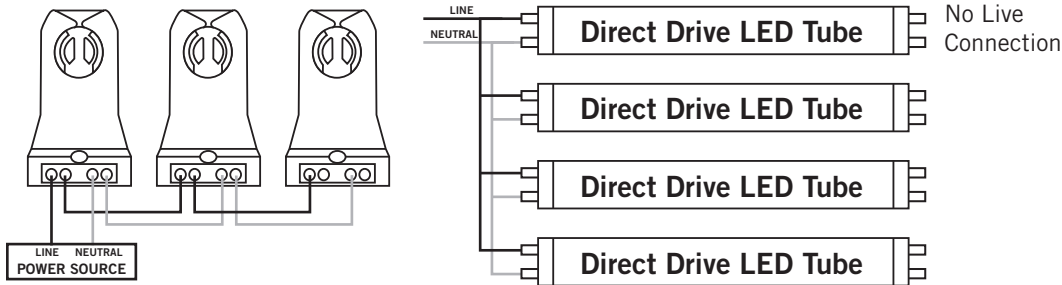
#### WIRING DIAGRAMS

1. Cut all existing connections to ballast as shown below and remove ballast.

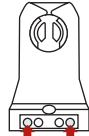
#### Typical Ballast Configurations:



2. Re-wire fixture as shown below.



#### Typical Non-Shunted Lampholder



Connect wires directly to these terminals

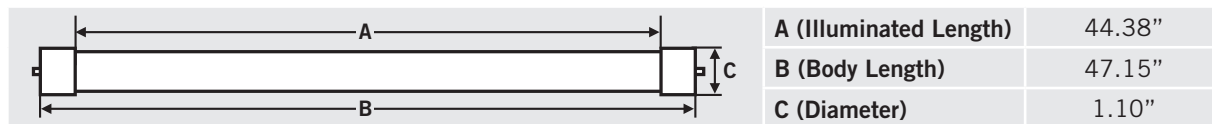
#### CAUTION: Use only non-shunted lampholders.

Do not install product in a fixture with shunted lampholders (found in all fixtures using instant start ballasts). If the current lampholders are shunted, remove them and replace them with non-shunted lampholders. Make new connections directly to terminals as indicated above.

Keystone can provide any style replacement lampholders. Call us at 800-464-2680.

#### PHYSICAL CHARACTERISTICS

##### LAMP DIMENSIONS



NOMINAL LENGTH: 48" BASE TYPE: G13 (Medium Bi-Pin)

#### ORDERING INFORMATION

ORDER CODE	PACKAGING STYLE	PACK QTY.	ITEM STATUS
KT-LED18.5T8-48GC-840-D /G2-CP	Carton Pack (Egg Crate Packaging)	25	Quick Ship

#### CATALOG NUMBER BREAKDOWN

# KT-LED18.5T8-48GC-840-D /G2-CP

Keystone Technologies	LED Lamp	Wattage	Lamp Type	Nominal Length (Inches)	Shatter-Proof Coated Glass	800 Series	Color Temp.	Direct Drive Series	2nd Generation	Packaging Style
-----------------------	----------	---------	-----------	-------------------------	----------------------------	------------	-------------	---------------------	----------------	-----------------